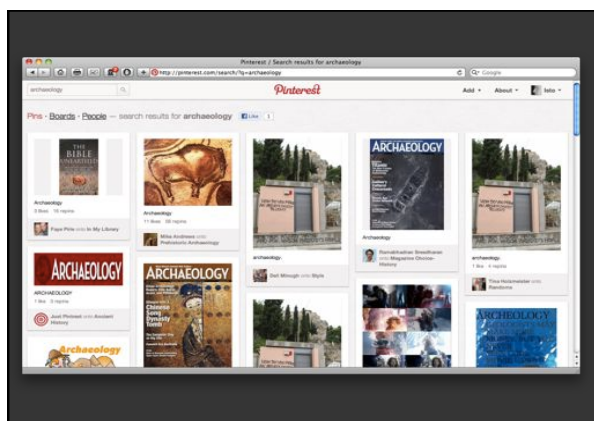


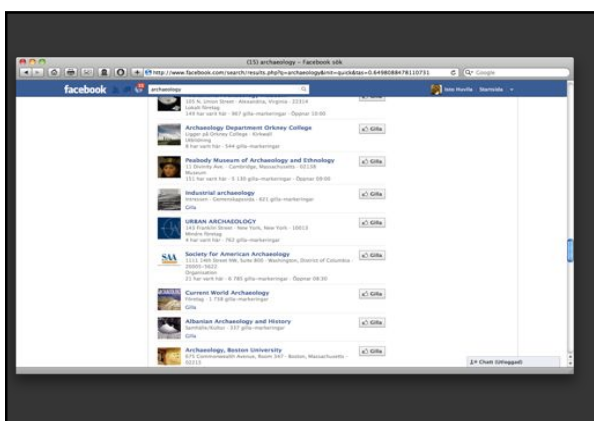
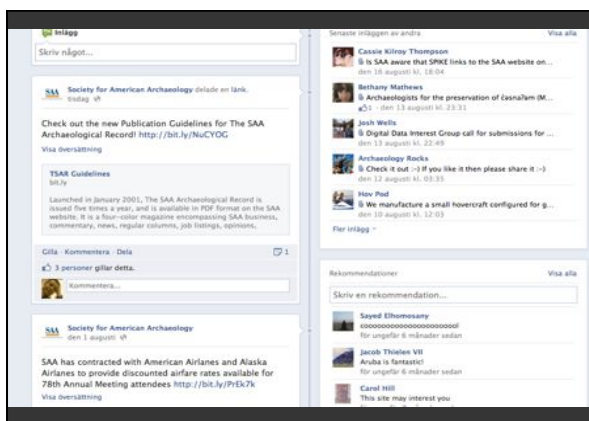
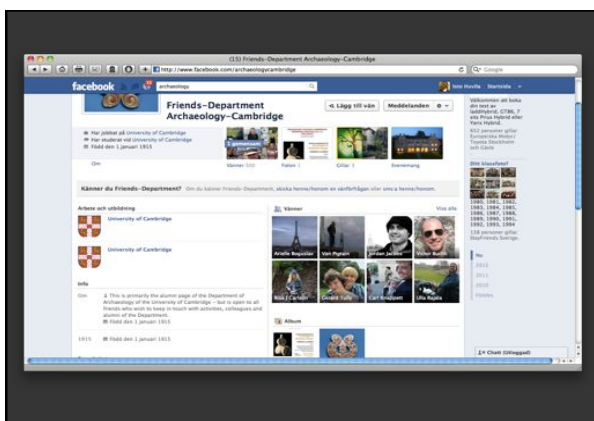
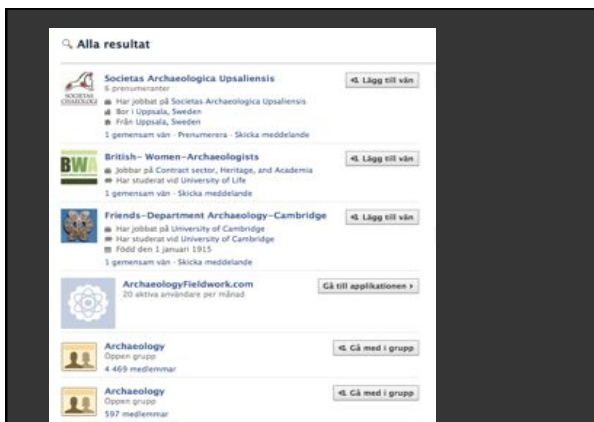
Engagement has its consequences
social media, participatory knowledge
production and the changing face of
archaeological work

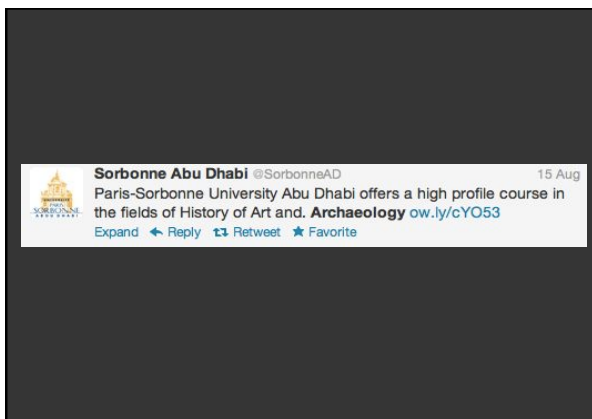
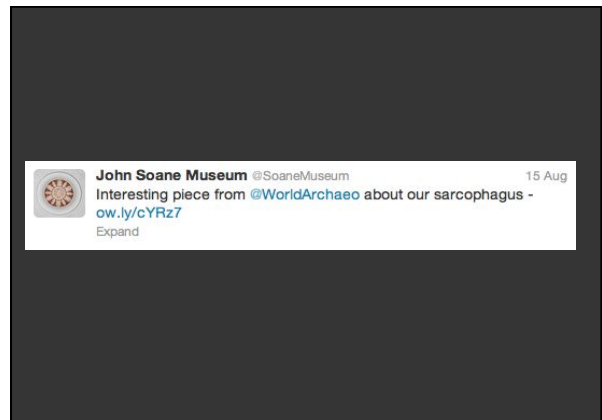
Isto Huvila
Åbo Akademi University, Finland

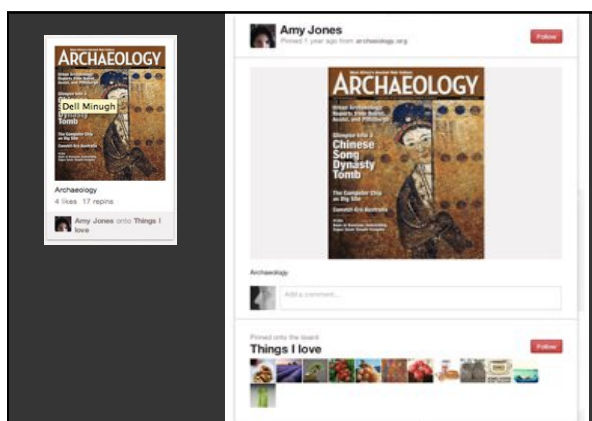
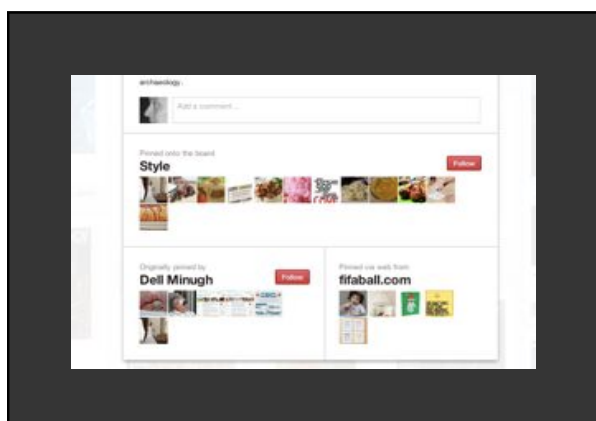
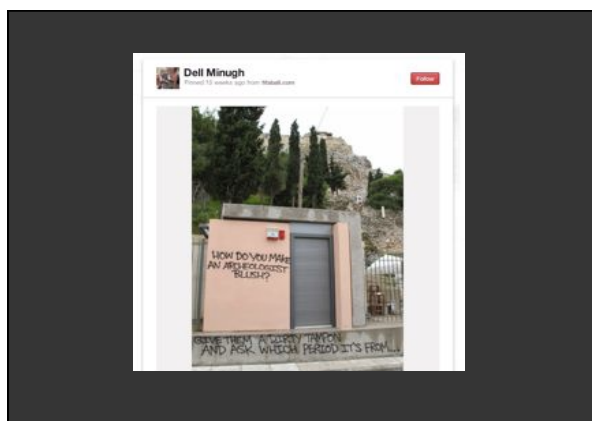
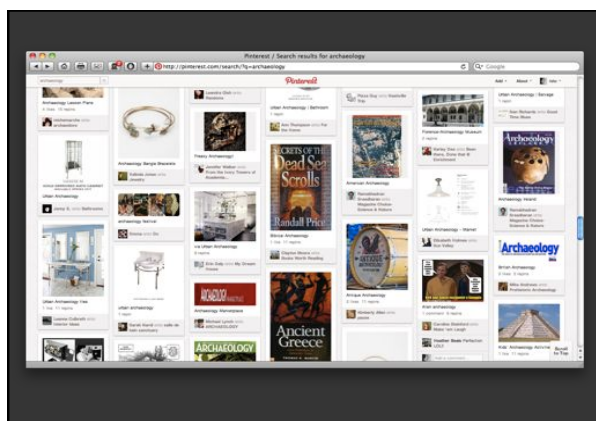


empirical work
content analysis

facebook
twitter
second life
pinterest







**knowledge
production in
social media?**

**archaeology is a
social practice.**

**representation of
archaeology is a
social practice.**

some findings.

**archaeology
according to
facebook.**

**pinterest for
archaeology.**

second life of my archaeology.



 A screenshot of an Excel spreadsheet titled "Site and method". The spreadsheet contains columns for "Site", "Method", "Age (BP)", "Age (cal BP)", and "Notes". It lists various archaeological sites and methods, such as "Amont" and "Blomborn". A URL is visible at the bottom: <http://dro.dur.ac.uk/3693/2/SupplementaryTables.xls>.

archaeology according to a database.

the difference is the difference of each service.

services as is.

services for something.



Engagement has its consequences
social media, participatory knowledge
production and the changing face of
archaeological work

Isto Huvila
Ph.D., Docent, Senior Lecturer
Åbo Akademi University, Finland
firstname.lastname@abo.fi
www.istohuvila.fi
@ihuvila